

ALCO LINE

THE LUXURY INNER SOLUTION

LAHARI LAMINATES PVT. LTD
Hirapur Jarway, P.O.: Tendua, Via: Tatibandh,
Raipur - 492099 (India)
Web.: laharilaminates.com,
Email: lahari.lam@gmail.com

Designed & Concept by: **BRANDSWITCH**

FABRIC & WOOD
collection

ALCO LINE
THE LUXURY INNER SOLUTION

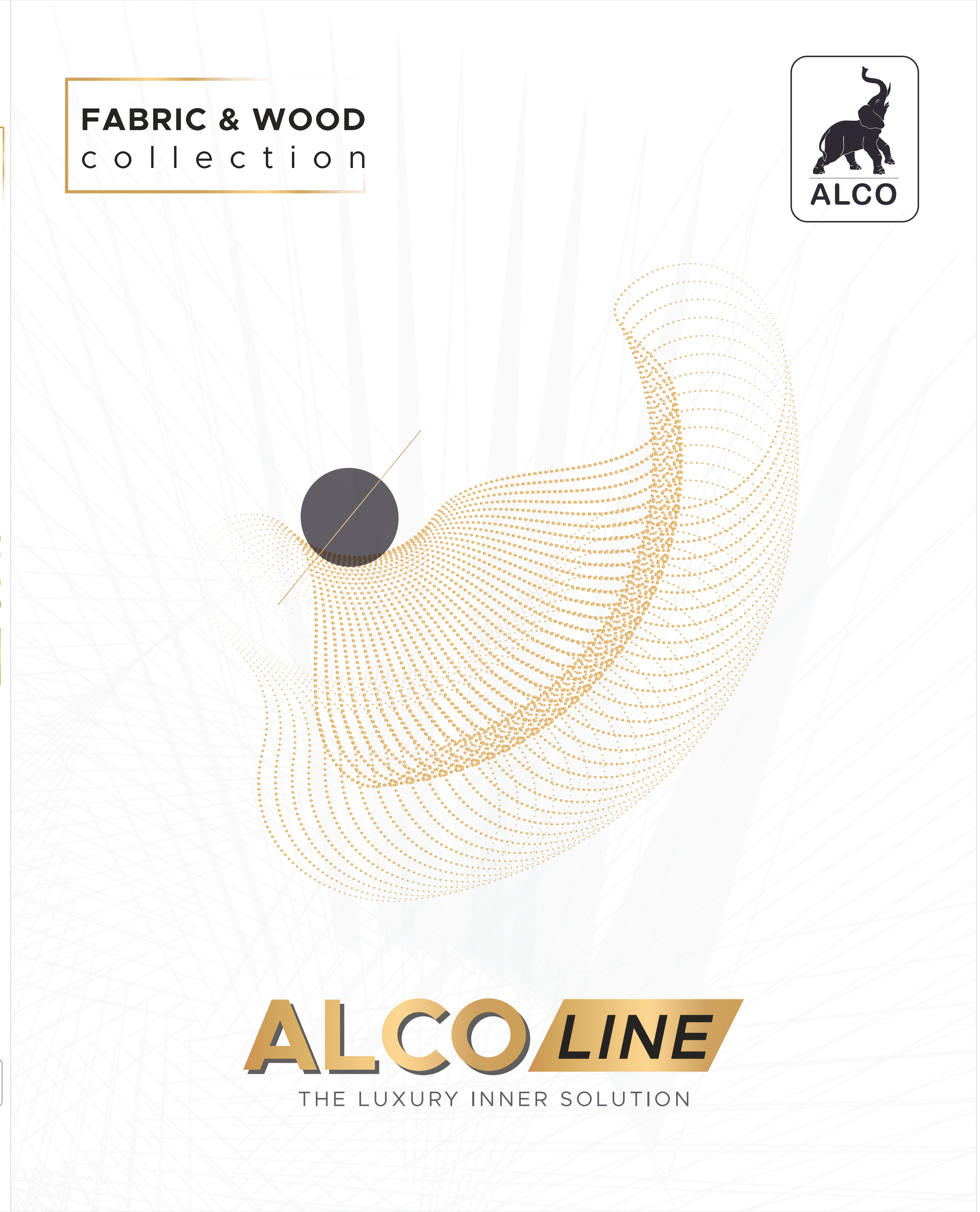


FABRIC & WOOD
collection



ALCO LINE

THE LUXURY INNER SOLUTION





ALCO LINE

THE LUXURY INNER SOLUTION

An elegant, refined surface is so desired by everyone. To respond to the most complex, modern project design demands we are featuring stunning fabric textures which are not only soothing and contemporary but also 100% urea free with premium quality and durability. Introducing our new fabric & wood collection by Alco Line which will let you accomplish all your interior design demands.

FABRIC COLLECTION



SF 411 | WOVEN FABRIC BEIGE



SF 412 | WOVEN FABRIC GREY

COLORS OF COMPLETE CLASS



S
N
R
E
T
T
A
P
D
L
O
B



SF 413 | LINEN CREAM



SF 414 | LINEN GREY



SF 415 | LINEN WHITE



SF 416 | GREY KHADI

FABRIC COLLECTION



SF 417 | EUPORA WHITE



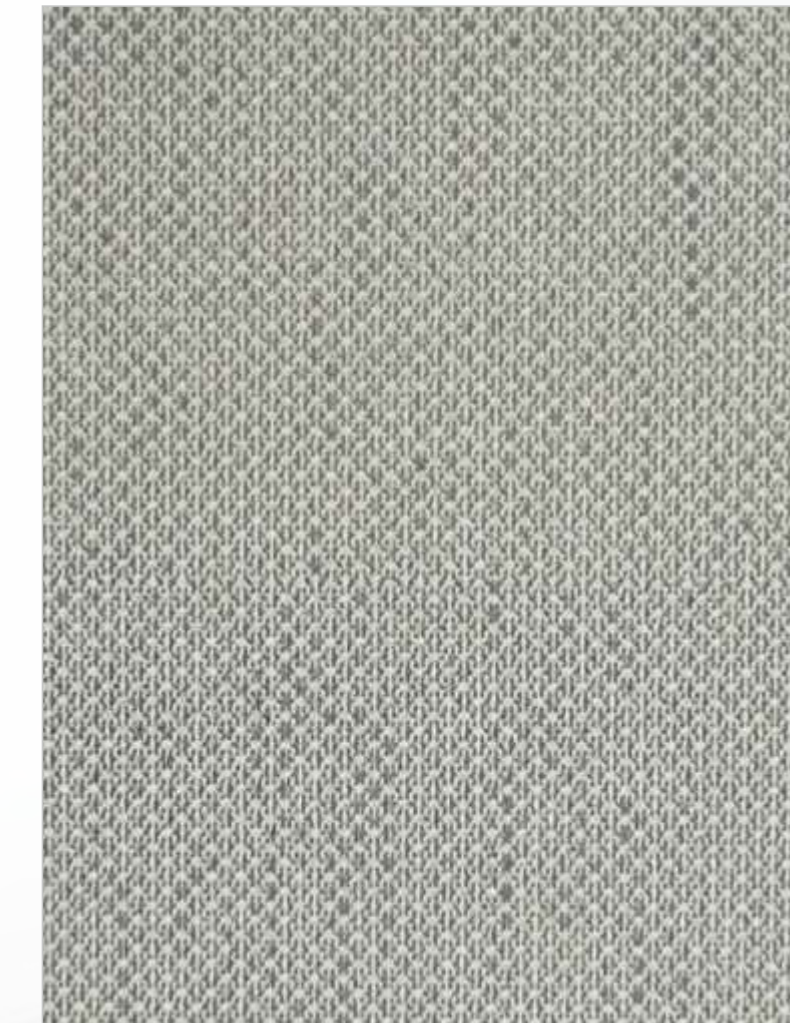
SF 418 | EUPORA GREY



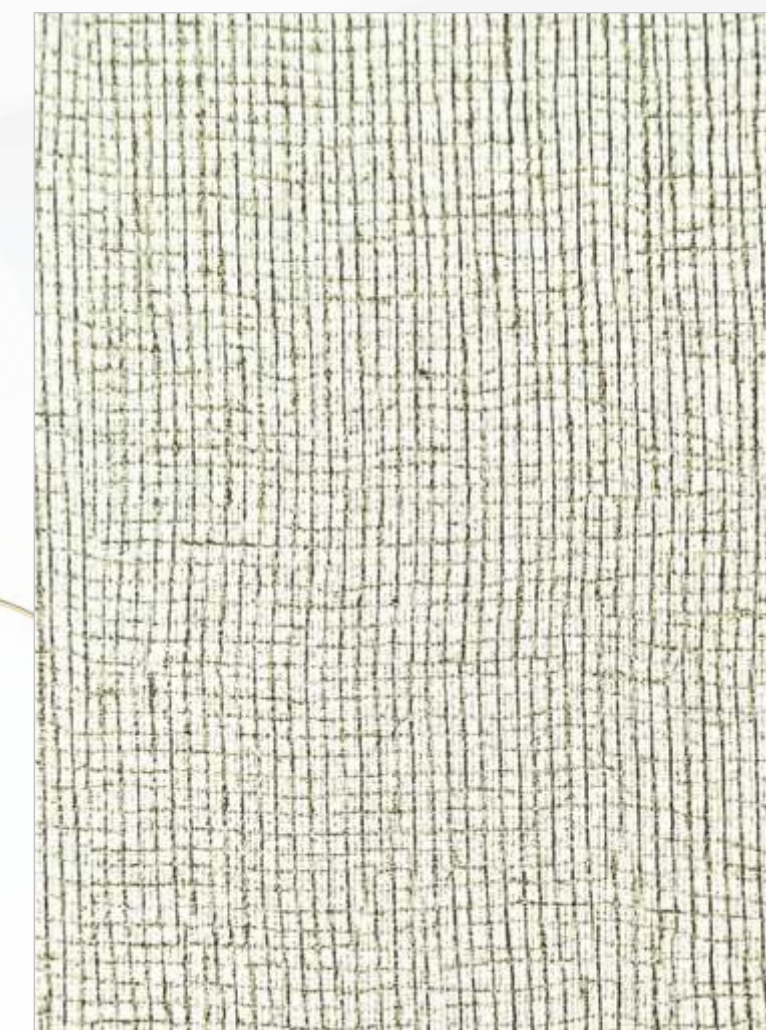
SF 419 | ZODIAC CREAM



SF 420 | DENIM WOOL



SF 421 | DENIM GREY



SF 422 | TERAKORA GREY

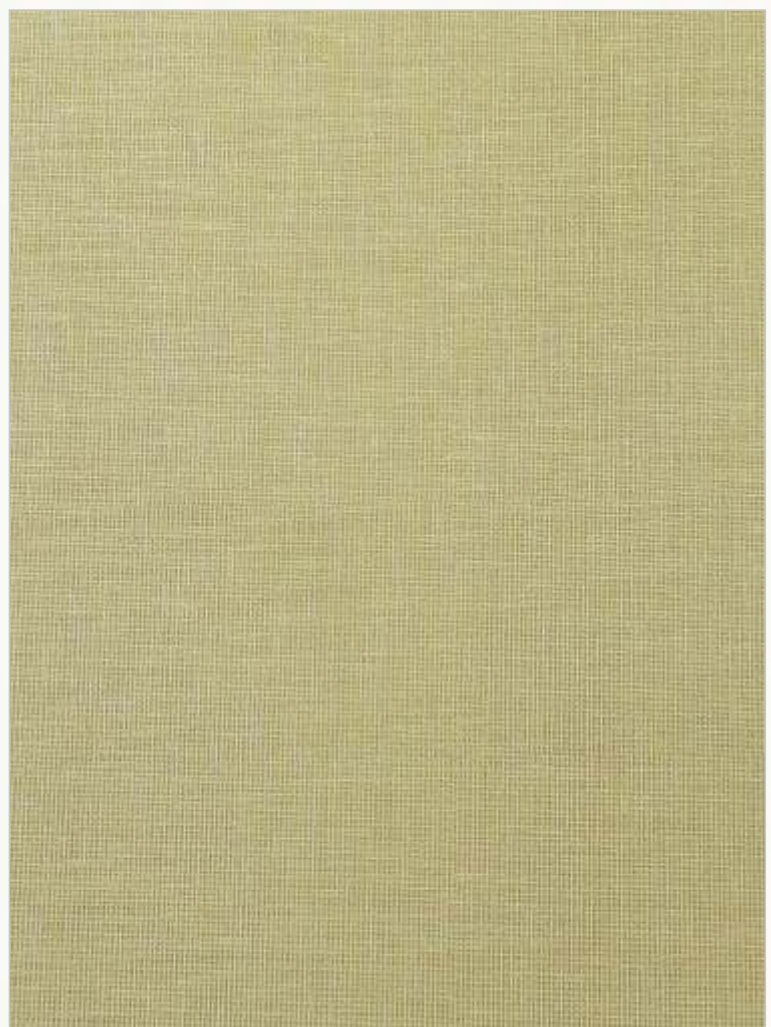


SF 423 | TERAKORA CREAM

FABRIC COLLECTION



SF 424 | RAYON WHITE



SF 425 | RAYON CREAM



SF 426 | CAMBRIC WHITE



SF 427 | CAMBRIC CREAM



SF 411 WOVEN FABRIC BEIGE



SF 412 WOVEN FABRIC GREY



SF 413 LINEN CREAM



SF 414 LINEN GREY



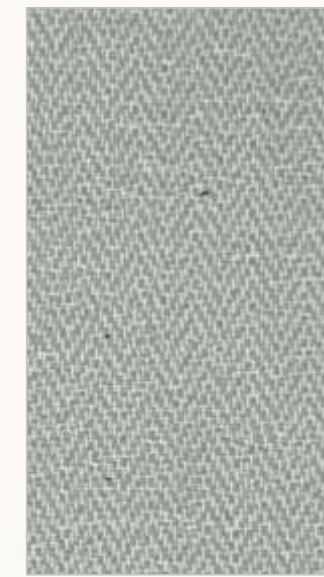
SF 415 LINEN WHITE



SF 416 GREY KHADI



SF 417 EUPORA WHITE



SF 418 EUPORA GREY



SF 419 ZODIAC CREAM



SF 420 DENIM WOOL



SF 421 DENIM GREY



SF 422 TERAORA GREY



SF 423 TERAORA CREAM



SF 424 RAYON WHITE



SF 425 RAYON CREAM



SF 426 CAMBRIC WHITE



SF 427 CAMBRIC CREAM

F
A
B
R
I
C

P
A
L
L
E
T

Warm
TONES



SF 451 | ANTIQUE WALNUT



SF 452 | BRISTOL WOOD



SF 453 | PACIFIC WOOD

WOODEN COLLECTION



SF 454 | CANADIAN WALNUT



SF 455 | DARK WALNUT



SF 457 | REGAL WOOD



SF 458 | GOLDEN TEAK



SF 456 | GANA OAK

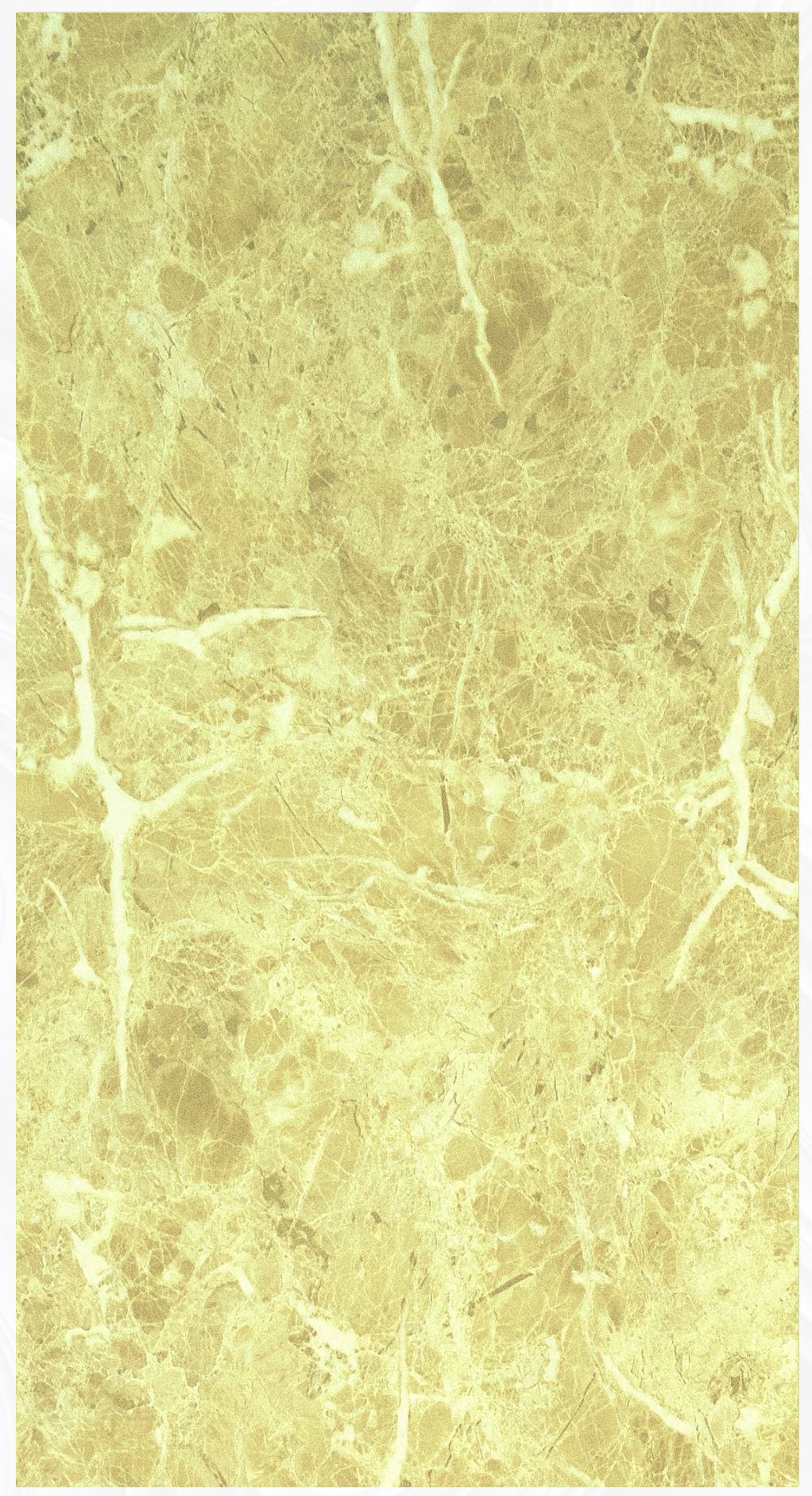


SF 459 | SAHARA WOOD



SF 460 | NATURAL TEAK

G L A M O R O U S



HG 491 | IRISH MARBLE



HG 492 | IRISH MARBLE BROWN

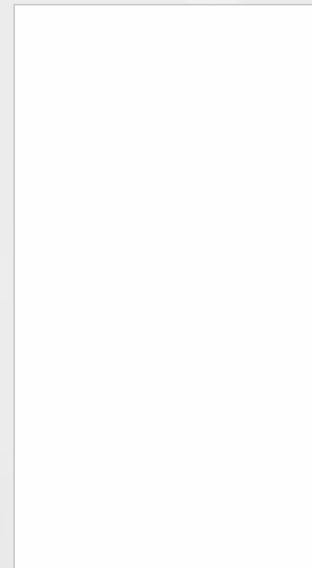


HG 493 | SATVARIO

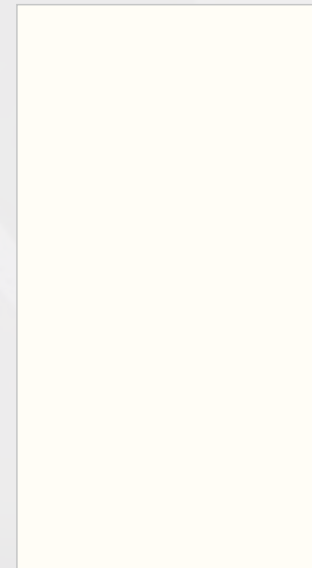


HG 494 | ITALINO

SOLID COLLECTION



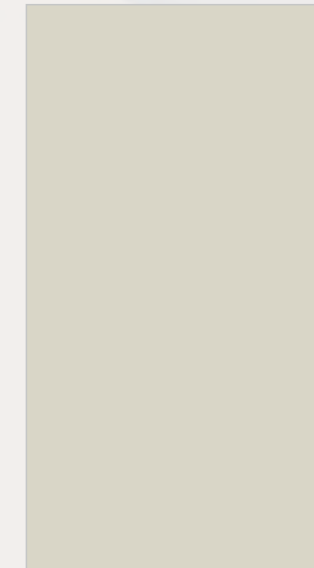
SF 401
WHITE



SF 402
OFF WHITE



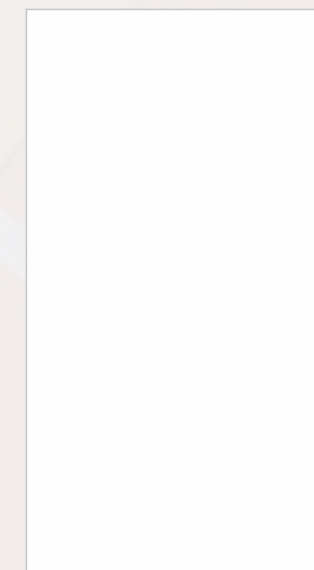
SF 403
BEIGE



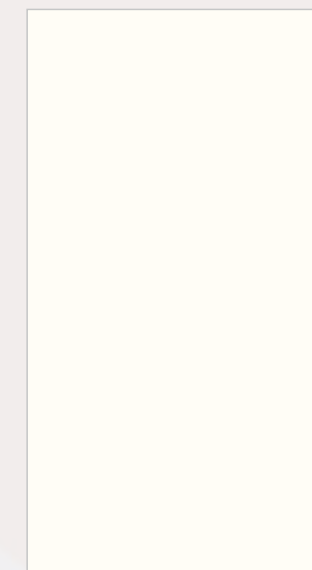
SF 404
COSMIC GREY



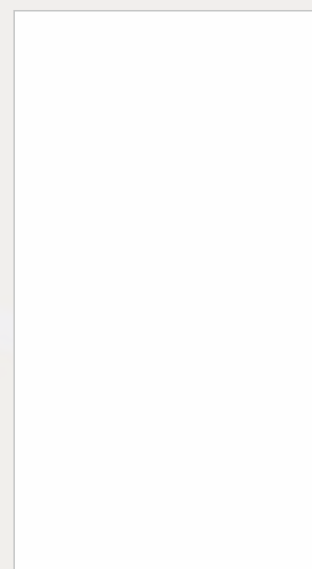
SF 405
BLACK



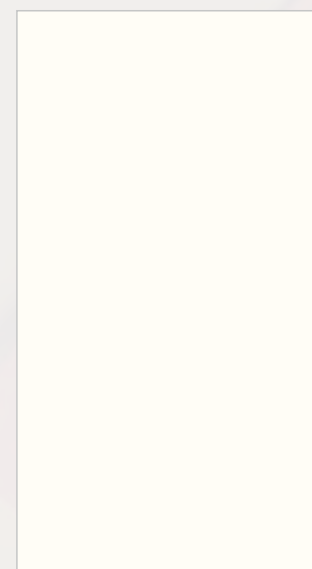
MF 401
WHITE



MF 402
OFF WHITE



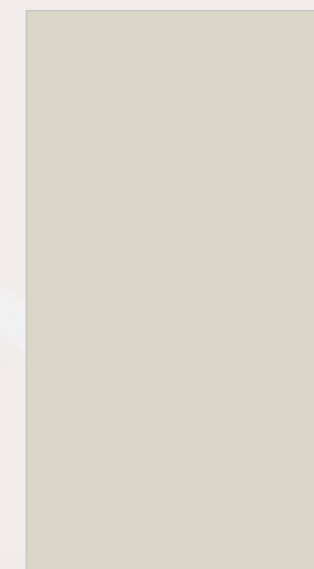
HG 401
WHITE



HG 402
OFF WHITE



HG 403
BEIGE



HG 404
COSMIC GREY



HG 405
BLACK

TECHNICAL SPECIFICATION



Technical Specification			
Properties	Unit	IS:2046-1995, Type VGS	Alco Line Conforms
Thickness	mm	0.8 (± 10%)	✓
Resistance to surface wear	Revolutions. (min)	150	✓
Resistance to immersion in boiling water - Mass increase (%) - Thickness increase (%) - Appearance	% Max. % Max. Grade (not worse than)	12.0 14.0 4	✓
Dimensional stability at elevated temperature - Longitudinal (%) - Transverse (%)	% Max. (L) % Max. (T)	0.65 115	✓
Dimensional stability at 20° c - Longitudinal (%) - Transverse (%)	% Max. (L) % Max. (T)	0.425 0.675	✓
Resistance to impact by small diameter ball	N (Min.)	20	✓
Resistance to cracking	Grade (not worse than)	4	✓
Resistance to scratching	N (Min.)	175	✓
Resistance to staining	Grade (not worse than)	5	✓
Resistance to colour change - In xenon arc light - In enclosed carbon arc light	Grade (not worse than) Grade (not worse than)	6 5	✓
Resistance to steam	Grade (not worse than)	4	✓

Size: 2440 mm X 1220 mm (8' X 4')

Finish: Highgloss / Matt / Suede

Care & Maintenance: Cleaning should be carried out with a soft moist cloth and warm soap solution. Do not use detergents containing abrasive particle or excess soda.

Limited Warranty: Alco Line Collection warrants that its products are free from manufacturing defects and perfect for use under normal condition. The product should be inspected prior to installation. For non-conforming material the company is liable for the cost of the product only.

